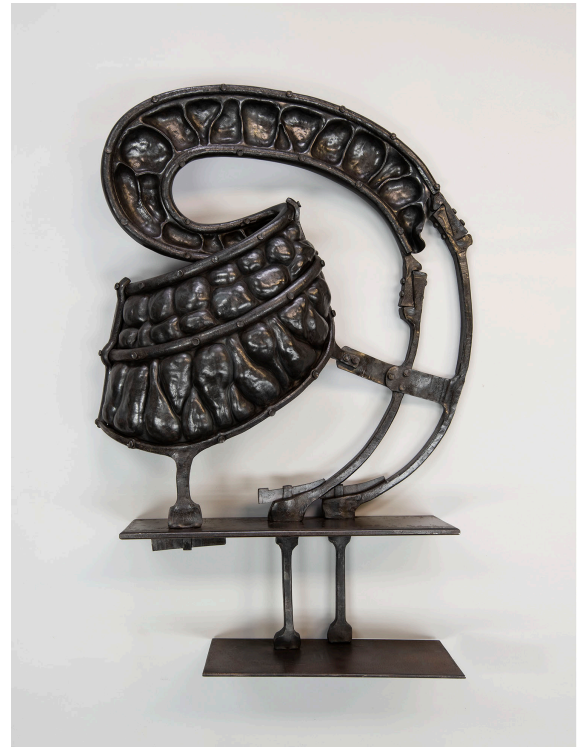


RACHEL DAVID

www.redmetal.net

Instagram: [@ redmetal](https://www.instagram.com/redmetal)



Rachel David
Cycle Shelf, 2018
Steel

Photo courtesy of Sesthasek "Seth" Boonchai.

ARTIST STATEMENT

Iron is found at the center of the earth as pulsing magma, in space as meteors, and in our blood cells. I employ forging operations to massage shapes and forms referencing body and landscape from inert steel. This approach is a constant but my intentions continually evolve. With each new piece, the conceptual depth and tactile quality grows, and my ability to convey my concerns expands. My sculptural work addresses social inequalities, environmental degradation, systemic prejudice, exclusion, and oppression. It is inspired by my dreams, my life and body, the landscapes I pass through, and the processes of metalworking I employ. The whole pattern is one I hold close and repeat as a method of living with conscientious care, keeping in mind the carbon footprint of my own practice and trying to create opportunities for people at the margins to participate.

METAL
MUSEUM